



NETWORK AND ITS TYPES

Dr.Romsha Sharma
Assistant Professor
Dept.Computer Sc.
Career College,Bhopal

What is Network?

- A network consists of two or more computers that are linked in order to share resources, exchange files, or allow electronic communications.
- The computers on a network may be linked through cables, telephone lines, radio waves, satellites, or infrared light beams.

Types Of Network

PAN

LAN

MAN

WAN

PAN(Personal Area Network)

A **personal area network**, or **PAN**, is a computer very small network organized around an individual person. This could be inside a small office or residence.

A typical PAN would include one or more computers, telephones, peripheral devices, video game consoles and other personal entertainment devices.

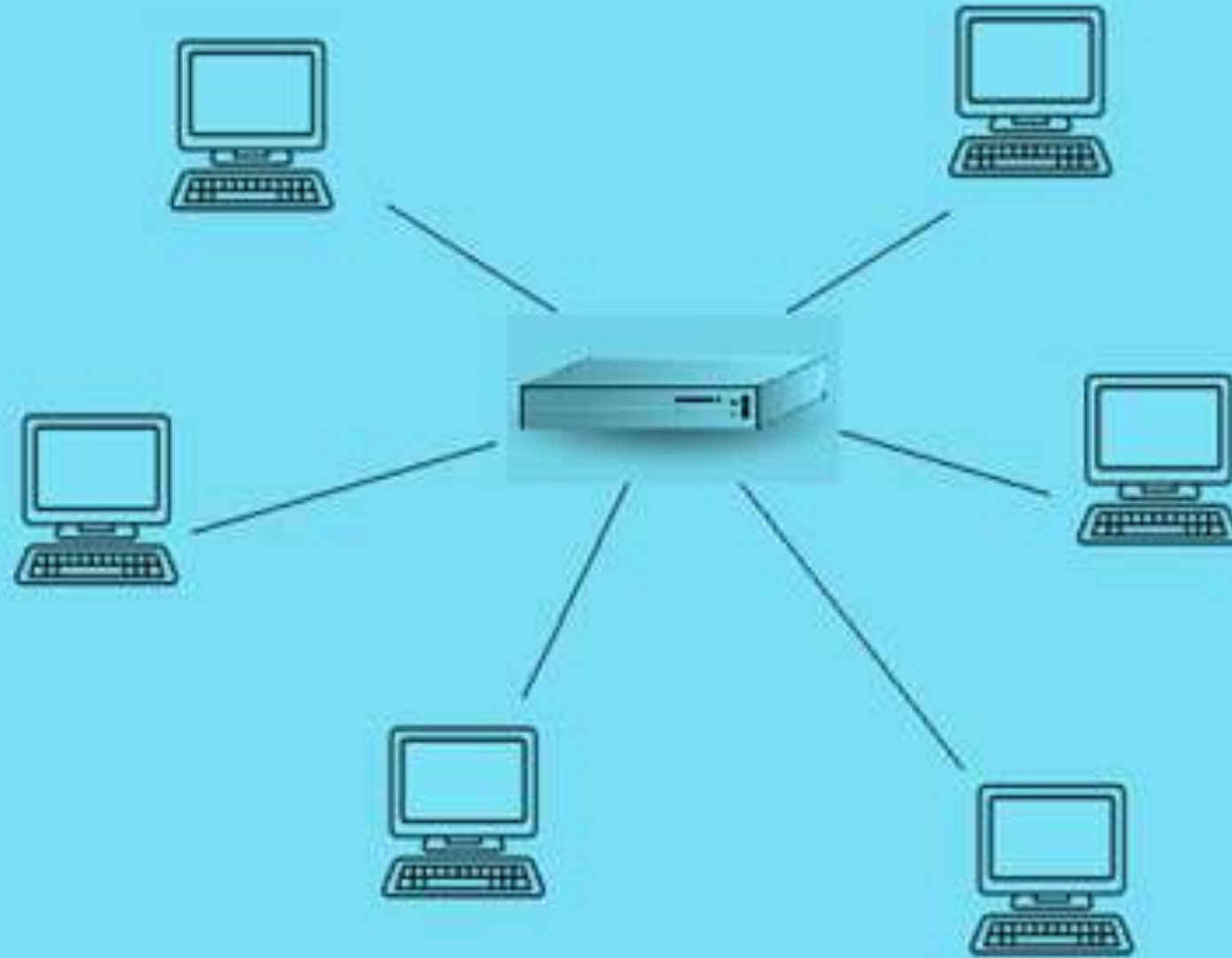
Example: Bluetooth devices.



PAN
(Personal
AREA
NETWORK)

LAN (Local Area Network)

- It is defined as a computer network that is responsible for connecting local areas like schools, residents, universities, etc.
- The main function of the local area networks is to link the computers, thereby providing access to the printers, photocopies, and other services. LAN has a client-server architecture.



LAN
(LOCAL
AREA
NETWORK)

MAN(Metropolitan Area Network)

- It is defined as the computer network that joins the metropolitan areas .
- The telephone company network is a common example of MAN as they provide high-speed DSL line to the consumers.



MAN

Metropolitan area network

A wide area network (WAN)

It is a computer network that covers a large geographical area comprising a region, a country, a continent, or even the whole world.



Further reading:

- ❖ <https://nptel.ac.in/courses/106105081>
- ❖ <https://www.tutorialspoint.com>
- ❖ <https://www.india.gov.in/my-government/documents/e-books>

Quiz

1. What is the acronym for LAN?

- A. Local Area Network
- B. Local Access Network
- C. Line And Networking
- D. Line-less Networking

Ans: A

2. Types of Network

- A. PAN
- B. LAN
- C. MAN
- D. WAN
- E. All of the above

Ans: E

3. What is the acronym MAN stand for?

- A. Magnetic Access Network
- B. Metropolitan Area Network
- C. Multi-Area Network
- D. Multi-Access net

Ans: B

4. The largest WAN existing on this earth is ____.

- A. Internet
- B. Extranet
- C. Usenet
- D. Sonet

Ans: A

5. The telephone company network is a common example of –

A. WAN

B. LAN

C. PAN

D. MAN

Ans:D

Thank You